

Lapeer Community High School

Kevin H. Walters, Principal

October - December 2011

Lapeer Community High School @ Cramton

Phone: (810) 667-2453, Fax: (810) 667-2412

1220 Lake Nepessing Rd, Lapeer, MI 48446

Web Site: www.lapeerschools.org/lchs



"Together We CAN Succeed"



SCHOOL CALENDAR

October 4

- Picture Retakes/
Student ID

October 19

- 9th grade MEAP testing,
8-10:30am @ Cramton

October 27

- Parent Teacher
Conferences, 4-7pm

October 28

- NO SCHOOL

November 3

- School Board Meeting
at Cramton 7pm

November 18

- Exams (Full day)
Times TBA

November 21 & 22

- Exams (2 hour early
release) Times TBA

November 23

- NO SCHOOL –
Records Day

November 24-27

- NO SCHOOL –
Thanksgiving Holiday

December 22-Jan 2

- NO SCHOOL –
Winter Recess

2011-2012 OMNI STUDENTS

OMNI is a student-led group comprised of students from all three district high schools. The group meet once a month to plan service activities and promote projects between the high schools, including Battle of the Bands and the OMNI Forum.

This year's Forum members are: Shaina Richardson, Aaron Thornsby and Megan Harlow. Thank you for representing LCHS!

Mission Statement

Lapeer Community High School will provide students with a safe, alternative learning environment in which they can develop and demonstrate the social, academic and career skills necessary to be lifelong learners and responsible citizens in a global society.

Principal's Message

Welcome to the start of the 2011-2012 school year! The first few weeks have been exciting and filled with typical back-to-school activities. This year represents our third year in the renovated Cramton building. We are proud to again announce that we are at capacity for the start of the 2011-2012 school year.

Community High School offers an opportunity for students to be successful in an alternative educational setting. The approach is individualized and focused on assisting students in making progress toward a high school diploma. It is important to understand that our standards are identical to the other two high school buildings in Lapeer Community Schools in earning that diploma. Beyond that, our students participate fully in both state and national testing batteries as well. We are proud of the success that our students have displayed and expect that to continue this year as well.

I would encourage you to get involved. We welcome any suggestions that will help us to continue to deliver a quality education to our students. Please feel free to contact us if you have any concerns or questions.

Thank you for your continued support of this vital program.



Attendance Policy

Arriving to class on time, prepared and attending on a regular basis is essential for academic success. Seven absences from any class may result in loss of credit in that class for the term. Students are marked tardy within the first 10 minutes of class; after 10 minutes, the tardiness counts as an absence. Being tardy three times in one class will equal one absence.

Students arriving within the first 10 minutes of the school day should report directly to their first hour class and will be marked tardy. Students arriving more than 10 minutes late must report to the office, sign in and get a pass.

LCHS is a Closed Campus

Leaving the building or grounds (including at lunch) without following proper sign-out procedures in the office will be considered an absence for the remainder of the day and will result in student discipline.

Please make every attempt to schedule appointments around the school hours and calendar. **REPORT ALL ABSENCES BY CALLING 810-667-2453 Ext. 2 for the office.**

MEAP Testing Reminders!

All 9th grade students will be taking the Social Studies MEAP on Thursday, October 19, 2011. The testing will take place at LCHS-Cramton from 8:00 – 10:30am.

Please make sure your student is in attendance, well rested and is ready to go! Any questions regarding testing and assessments may be directed to Mrs. McKee.



2011-2012 STAFF**OFFICE STAFF**

- Kevin H. Walters,
Principal- Main Office
- Kathy McKee, B111
Non-traditional Studies
Coordinator (Counselor)
- Karen Ridenour,
Secretary - Main Office

TEACHING STAFF

- Jeannine Baum
Social Studies/Civics
B124 & B106
- Troy Norman - Math, B103
- Bill O'Bryan - English, B114
- Rod Schuch
History/Health/Gym
B124 & GYM
- Don Shaver-Science, B106
- Kelly Wagner-Art, B100
- Doug Grover-SE, B110
- Cindy Tanke-English, B102

PROGRAM SUPPORT

- Gary Chalice

PARAPROFESSIONAL

- Tina Flores

CUSTODIAN

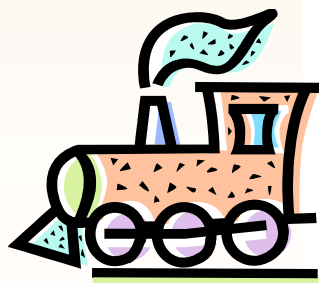
- John Wilson

COOKS

- Edie Hogan

**NEWSLETTER
UPDATE**

Beginning in October of this school year, building newsletters will be available online and hard copies will no longer be sent home for all students. Parents will be notified through the School Messenger system that a newsletter has been posted and is available for review on the building website. Hard copies will be available for pick-up in the main office of any school building.



"A collaborative effort helping Lapeer County families"

LCS Expands Options for Reduced Ticket Prices at Athletic Events

Lapeer Community Schools is pleased to announce a variety of options for reduced entry fee rates to attend LCS home athletic events.

New this year, elementary students attending a Lapeer Community Schools building in grades K-5 will be allowed into all home regular season LCS athletic events free of charge when accompanied by a parent or guardian. Also new this year, Lapeer Schools will offer a student athletic pass. High school students may purchase a 2011-2012 High School Athletic pass for \$50.00 which will allow entry into all home regular season high school (East and West) athletic events for the entire school year. Middle school students may purchase a year long pass for \$20.00 that will allow entry into all home middle school (Rolland-Warner and Zemmer) events.

Once again this year, discounted punch cards are available to anyone in the Lapeer Community to allow admission to regular season home athletic events at significantly reduced rates. Discounted punch cards can be purchased for \$25.00 each to obtain \$50.00 worth of admission into LCS home events. For an even greater savings, purchase five discounted punch cards and you will get the sixth card free. By spending \$125 on discounted punch cards, you will obtain \$300 worth of entry fees!

Discounted punch cards can be used on any regular season athletic event within Lapeer Community Schools, including all high school and middle school athletic contests. Families who qualify for free and reduced lunch are eligible to receive one free punch card per school year. Details will be mailed directly to qualifying families in the fall.

Discounted punch cards and student pass cards will be available for purchase at student registration. They are also available for purchase at the school offices at Lapeer East High School, Lapeer West High School, Rolland-Warner Middle School, Zemmer Middle School and in the main office at the Lapeer Schools Administration and Services Center.



Holiday Depot of Lapeer County

How to Apply:

If you are a low income resident in Lapeer County and are hoping to get help during the holidays for food and or gifts, the following information is very important.

Applications will be taken at the following dates and times. All applications must be filled out by the person requesting assistance.

- **First Presbyterian Church**
433 N Calhoun, Lapeer
Walk In: Tuesdays, October 4, 11, 18, 25
from Noon – 3:00 pm.
- **Human Development Commission**
1559 Imlay City Rd, Lapeer
Walk In: Thursdays, October 6, 13, 20, 27
from 9:30 – 11:30 am.
- **Human Development Commission**
at Lapeer County Center Building
425 County Center, Lapeer
Walk In: Tuesday, September 27
OR Tuesday, October 25
from 10:00 am – 1:00 pm
(at commodity food distribution)

IMPORTANT!!!

No application will be accepted without identification (driver's license or other ID with picture and address for parent and birth certificates or social security cards for children) and proof of all household income when you come to the intake. Bring your bridge card if you have one.

2011 Household Income Guidelines

Households with the following incomes qualify for help. Others with extenuating circumstances may also qualify.

# Members in Household	Monthly Income	Yearly Income
1	\$1361	\$16,335
2	\$1839	\$22,065
3	\$2316	\$27,795
4	\$2794	\$33,525
5	\$3271	\$39,255
6	\$3749	\$44,985
7	\$4226	\$50,715
8	\$4704	\$56,445
Add \$478 or \$5730 yearly for each additional household member.		
Higher incomes require an explanation on the application.		